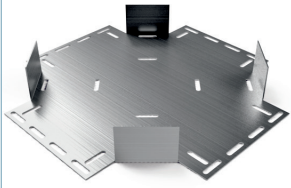


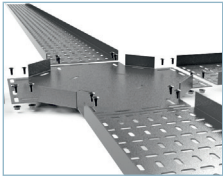
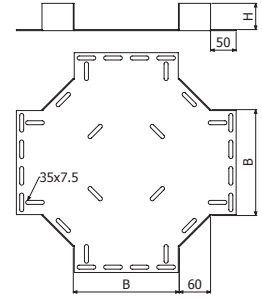


BASORTRAY

CRU



	B		H		GC			
					e=2mm		e=2,5mm	
	mm	inch	mm	inch	REF.	(kg/ud)	REF.	(kg/ud)
CRU 50x15xe	50	2"	15	3/5"	2/2609	0,53		
CRU 100x15xe	100	4"	15	3/5"	2/2610	1,07		
CRU 150x15xe	150	6"	15	3/5"	2/2611	1,61		
CRU 200x15xe	200	8"	15	3/5"	2/2612	2,17		
CRU 300x15xe	300	12"	15	3/5"	2/2613	3,68		
CRU 50x30xe	50	2"	30	1 1/6"	2/2617	0,62	2/2707	0,74
CRU 100x30xe	100	4"	30	1 1/6"	2/2618	1,07	2/2708	1,28
CRU 150x30xe	150	6"	30	1 1/6"	2/2619	1,61	2/2709	1,93
CRU 200x30xe	200	8"	30	1 1/6"	2/2620	2,25	2/2710	2,70
CRU 300x30xe	300	12"	30	1 1/6"	2/2621	3,77	2/2711	4,52
CRU 400x30xe	400	16"	30	1 1/6"	2/2622	5,29	2/2712	6,35
CRU 500x30xe	500	20"	30	1 1/6"	2/2623	6,81	2/2713	8,17
CRU 600x30xe	600	24"	30	1 1/6"	2/2624	8,33	2/2714	10,00
CRU 50x50xe	50	2"	50	2"	2/2625	0,73	2/2715	0,88
CRU 100x50xe	100	4"	50	2"	2/2626	1,19	2/2716	1,43
CRU 150x50xe	150	6"	50	2"	2/2627	1,73	2/2717	2,08
CRU 200x50xe	200	8"	50	2"	2/2628	2,37	2/2718	2,84
CRU 300x50xe	300	12"	50	2"	2/2629	3,89	2/2719	4,67
CRU 400x50xe	400	16"	50	2"	2/2630	5,74	2/2720	7,17
CRU 500x50xe	500	20"	50	2"	2/2631	7,94	2/2721	9,53
CRU 600x50xe	600	24"	50	2"	2/2632	10,48	2/2722	13,10



4/100 x B1 (2/6826 - GC)